

Dieterich Buxtehude
Je höher du bist

BuxWV 55

SONATA

Violino I

7

15

24

31

39

45

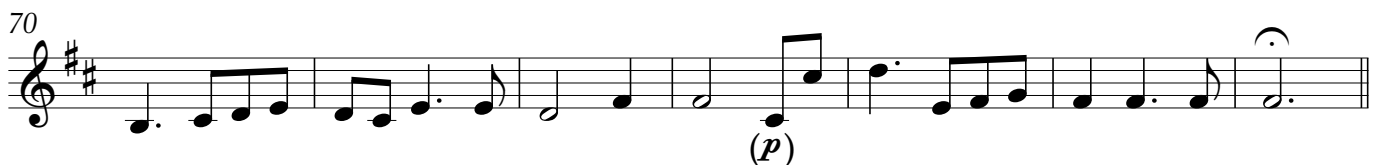
49

54

p

f

(p)



ARIA
1. Versus

2

7

13 RITORNELLO

18

22

p

Detailed description: This block contains the first system of the ARIA 1. Versus. It starts with a treble clef, a key signature of two sharps (F# and C#), and a common time signature (C). The first measure is a whole rest, followed by a measure with a '2' above it, indicating a second ending. The melody consists of eighth and sixteenth notes. Measures 7-12 continue the melody with some rests. Measure 13 is the start of the RITORNELLO, marked with a repeat sign. Measures 18-21 are a continuous sixteenth-note run. Measure 22 ends with a half note and a piano (*p*) dynamic marking.

ARIA
2. Versus

2

7

13 RITORNELLO

18

22

p

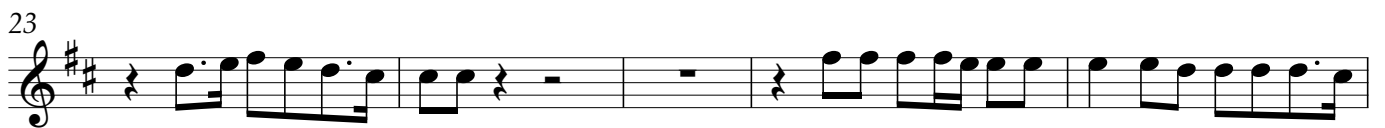
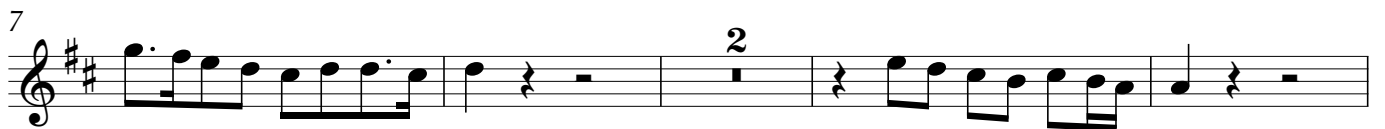
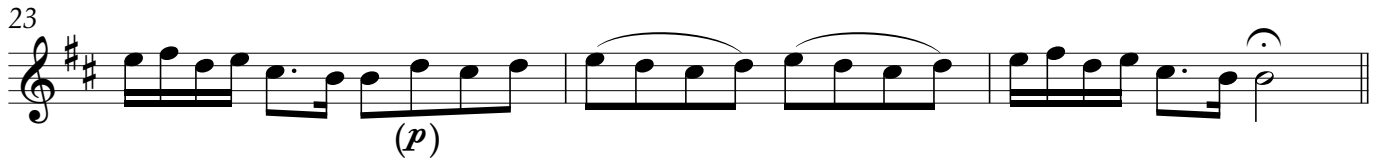
Detailed description: This block contains the second system of the ARIA 2. Versus. It follows the same notation as the first system, including the treble clef, key signature, and common time. It also features a second ending marked with a '2', a RITORNELLO section starting at measure 13, and a sixteenth-note run in measures 18-21. The piece concludes at measure 22 with a half note and a piano (*p*) dynamic marking.

ARIA
3. Versus

5

10

Detailed description: This block contains the third system of the ARIA 3. Versus. It begins with a treble clef, key signature of two sharps, and common time. The first measure is a whole rest, followed by a measure with a '5' above it, indicating a fifth ending. The melody is composed of eighth and sixteenth notes. The system ends at measure 10 with a half note.



[Je höher du bist – tutti]