

Dieterich Buxtehude

Domine Salvum fac Regem

BuxWV 18



Violoncello

Nota bene

2014

Dieterich Buxtehude

Violoncello

Domine Salvum fac Regem

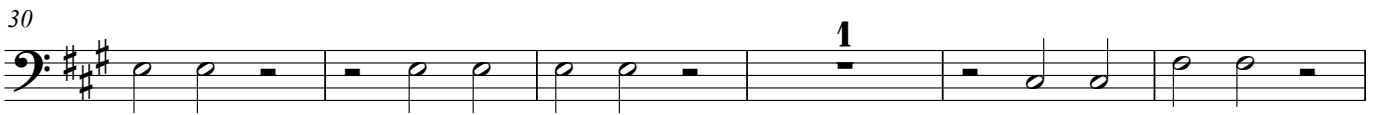
BuxWV 18

Sonata

Measures 1-27 of the Sonata. The key signature is D major (two sharps). The time signature is 3/2. The score is written for a single staff in bass clef. Measure 1 starts with a whole rest. Measures 2-5 contain a melodic line starting on G2, moving up stepwise to D3, with a slur over measures 2-3 and a dynamic marking *p* at measure 4. Measure 6 continues the line. Measures 7-10 show a descending line from D3 to G2, with a slur over measures 7-8 and a dynamic marking *f* at measure 10. Measures 11-14 continue the descending line. Measures 15-18 show a new melodic line starting on G2, moving up stepwise to D3, with a slur over measures 15-16 and a dynamic marking *p* at measure 18. Measures 19-22 continue the line. Measures 23-26 show a descending line from D3 to G2, with a slur over measures 23-24 and a dynamic marking *f* at measure 26. Measure 27 ends with a whole note G2.

Tutti - Domine salvum

Measures 1-21 of the Tutti - Domine salvum section. The key signature is D major (two sharps). The time signature is common time (C). The score is written for a single staff in bass clef. Measure 1 starts with a whole rest. Measures 2-5 contain a melodic line starting on G2, moving up stepwise to D3, with a slur over measures 2-3 and a dynamic marking *p* at measure 4. Measure 6 continues the line. Measures 7-10 show a descending line from D3 to G2, with a slur over measures 7-8 and a dynamic marking *f* at measure 10. Measures 11-14 continue the descending line. Measures 15-18 show a new melodic line starting on G2, moving up stepwise to D3, with a slur over measures 15-16 and a dynamic marking *p* at measure 18. Measures 19-22 continue the line. Measures 23-26 show a descending line from D3 to G2, with a slur over measures 23-24 and a dynamic marking *f* at measure 26. Measure 27 ends with a whole note G2.



Sonata repetatur

91 *Gloria Patri*
Adagio

